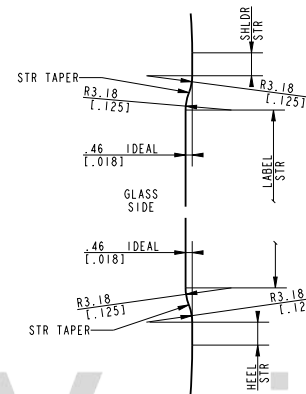
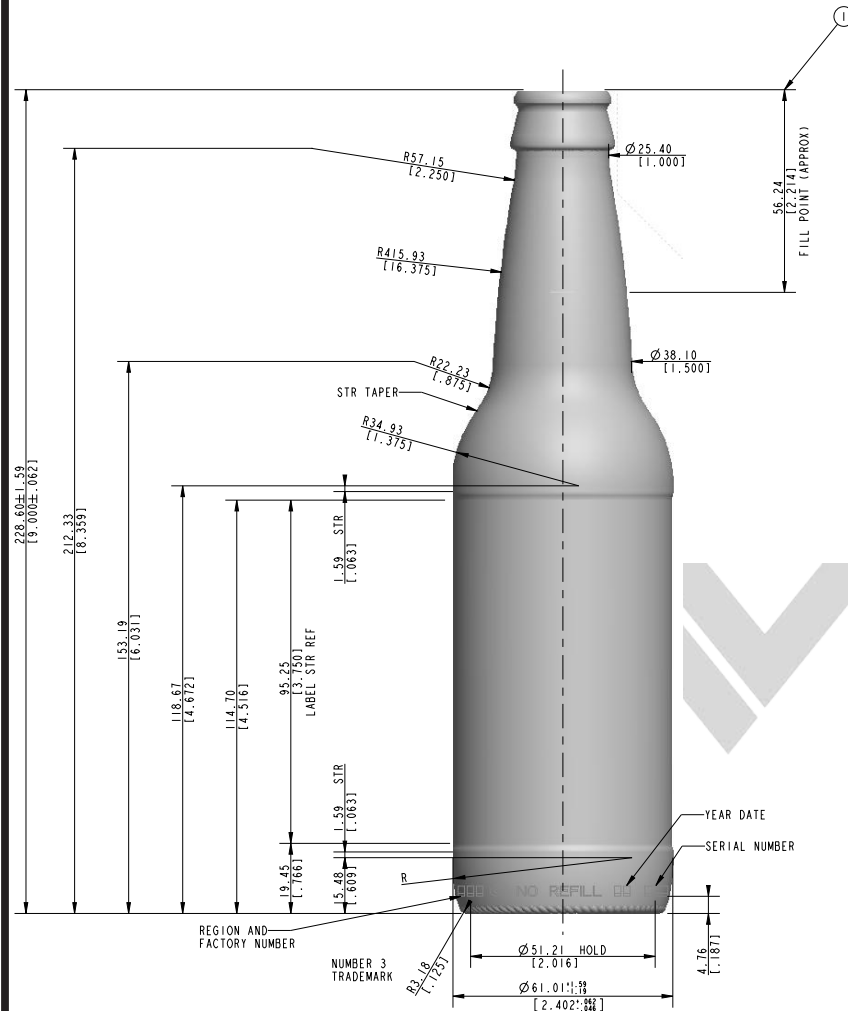


All American Containers, a business of Veritiv  
**allamericancontainers.com**



THIS BOTTLE, AS DESIGNED, DOES NOT PROVIDE STANDARD CROWN REST PLATFORM CLEARANCE. CUSTOMER MUST CONTACT THE EQUIPMENT SUPPLIER TO CONFIRM THAT SUITABLE CLEARANCE IS AVAILABLE.

① FILL POINT(S) - APPROXIMATE FILL LOCATION MAY VARY UP OR DOWN FROM THAT INDICATED.

C.I.D. DOT CODE AND CAVITY NUMBER TO APPEAR ON  
HEEL. CAVITY NUMBER TO BE 3.18 [.125] TALL.

HEEL LETTERING TO APPEAR ON SIDE OPPOSITE C.I.D.  
DOT CODE, AND TO BE 3.18 [ .125 ] TALL.

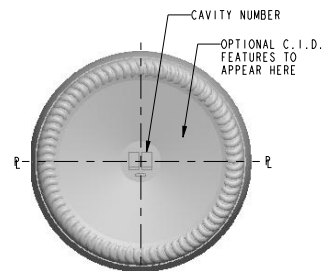
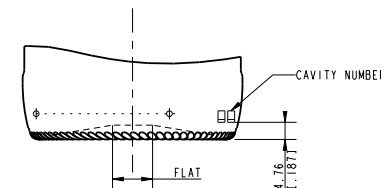
OPTIONAL:  
BOTTOM PLATE LETTERING TO BE 4.76 [.188] TALL,  
WITH BAR BELOW LETTERING.

OPTIONAL:  
C.I.D. RINGS OR DOT CODE TO APPEAR ON BOTTOM.

CRESCENT KNURLING TO APPEAR ON BEARING SURFACE.

THIS CONTAINER IS DESIGNED FOR PASTEURIZED PRODUCTS UP TO AND INCLUDING 3 GAS VOLUMES WHERE PASTEURIZATION TEMPERATURE OF 145° F IS NOT EXCEEDED.

IT IS THE RESPONSIBILITY OF THE GLASS CONTAINER PURCHASER TO CONSULT WITH ITS CLOSURE AND CONTAINER SUPPLIERS TO DETERMINE THE APPROPRIATE PRESSURE LIMITS FOR THE COMBINATION OF THE CONTAINER, ITS FINISH, AND THE CLOSURE CHOSEN, WHEN THE CONTAINER WILL BE SUBJECTED TO PRESSURE OR USED FOR CONTENTS UNDER PRESSURE.



INFORMATION CONTAINED HEREIN CONSTITUTES PROPRIETARY CONFIDENTIAL INFORMATION OF OWENS-BROCKWAY GLASS CONTAINER INC. AND IS TO BE ACCEPTED ONLY SUBJECT TO THAT UNDERSTANDING. IT IS TO BE KEPT CONFIDENTIAL AND NOT TO BE COPIED, USED OR CONVEYED TO OTHERS WITHOUT OWENS-BROCKWAY GLASS CONTAINER INC WRITTEN AUTHORIZATION.

ALL LETTERING TO BE ROUND BOTTOM STYLE,  
RAISED IN GLASS, UNLESS OTHERWISE NOTED.

CAPACITY VALUES BASED ON WATER AT 20°C [68°F]

ALL NON TOLERANCE SIZES ARE FOR  
MOLD MANUFACTURE REFERENCE ONLY.

APPROX. STABILITY PROPERTIES	EMPTY	FULL
CENTER OF GRAVITY (IN INCHES)	3.46	3.22
BOTTLE STABILITY RATIO	0.58	0.63
TIP ANGLE (IN DEGREES)	16.2	17.4

*SHEET 1 OF 2*

-3	07 NOV 07	SECONDARY FINISH WAS 026-0500-R004.	ERA
-2	20 JUN 07	REDRAWN; REMOVED TENTATIVE PRINT NOTE.	ERA
No	DATE	REVISIONS	DESIGN/CHECK

<b>CONTAINER OVERFLOW CAPACITY (BRIMFUL)</b>		
378.84 ml ± 5.55 ml [12.810 FL OZ ± 0.188 FL OZ]		
<b>CONTAINER RATED CAPACITY (FILLPOINT)</b>		
354.88 ml [12.000 FL OZ]		
<b>CONTAINER WEIGHT</b>		
198.45 g ± 8.86 g [7.000 OZ ± 0.313 OZ]		
<b>FINISH DESIGNATION</b> 026-0611-R002		<b>MAX GAS VOLUME</b> 3.0 Gas Vol
<b>PROCESS</b> NNPB	<b>RETURNABLE</b> NO	<b>DESIGN REF.</b> GB-15945

STOCK  
12 FL.OZ. LNNR

DESIGNER	KDC	DATE	11 NOV 02
CHECKED	KAR	DATE	24 AUG 09

DRAWING NUMBER	MOULD/SAP NUMBER
BE-41669-3	GB-16452